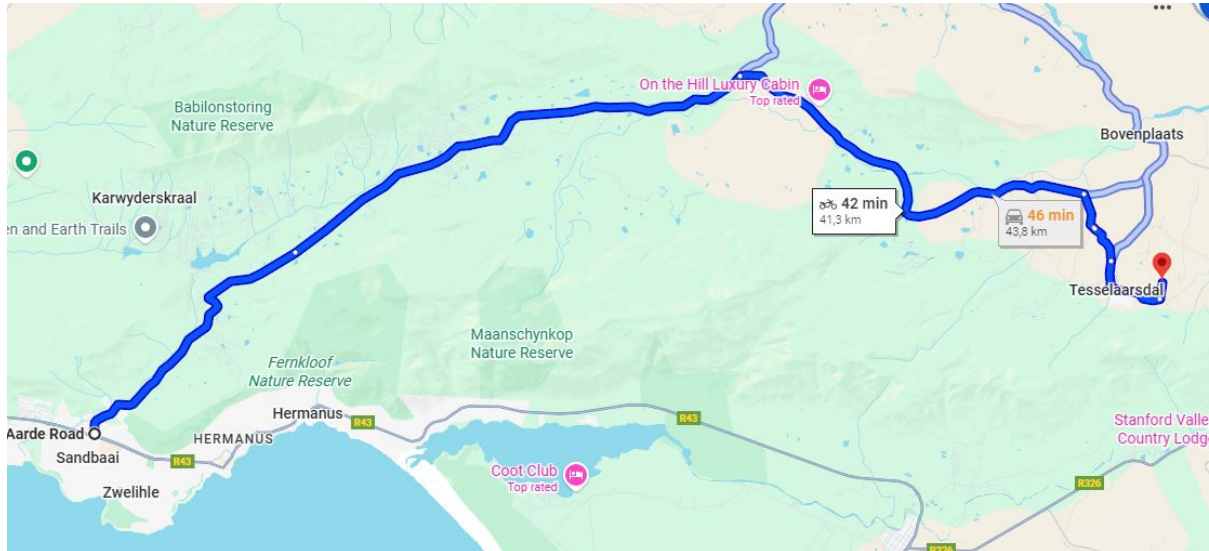


Directions: Hermanus to Hoenderhok Estate

🌐 https://www.google.co.za/maps/dir/-34.4118715,19.2010874/-34.3721819,19.5398182/@-34.3741921,19.3702382,11z?entry=ttu&g_ep=EgoyMDI1MTEwOS4wIKXMDSoASAFQAw%3D%3D



Head onto the Hemel-n-Aarde road (R320) from Hermanus.

Travel on the Hemel -n-Aarde Road (R320) for 24km up to the Tesselaarsdal/Solitaire turn off.



Turn right at the Tesselaarsdal/solitaire turn off.

Travel on the gravel road for 14km until you reach the second turn off to Tesselaarsdal.



Turn right and continue for 3,6km until you reach Tesselaarsdal town (road changes from gravel to tar in town).

IMPORTANT NOTICE:

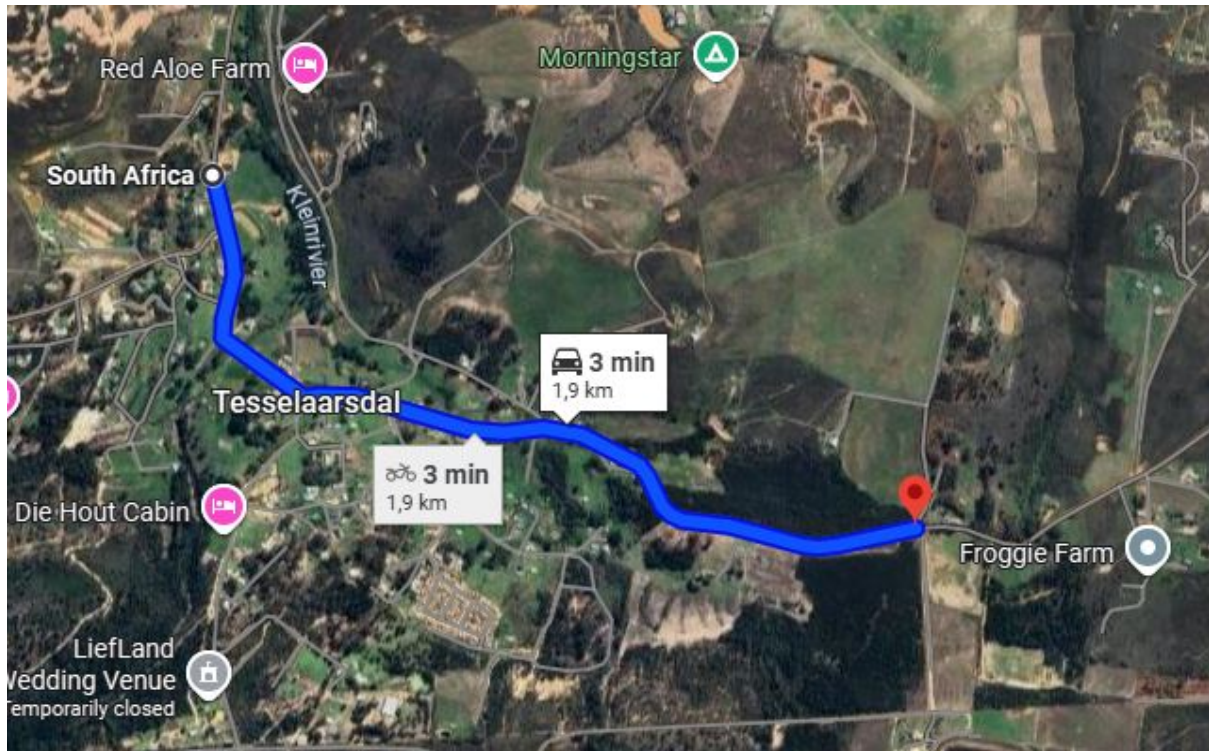
There are two access roads to Hoenderhok Estate, both described in details below.

Option 1 will be the route shown on a GPS. This road is accessible but very often in a very poor state. We would not suggest using this route.

Option 2 as described below crosses private farmland and is maintained by us. Even low clearance vehicles can easily navigate this route. Clear signage has been erected to ease your navigation along this route.

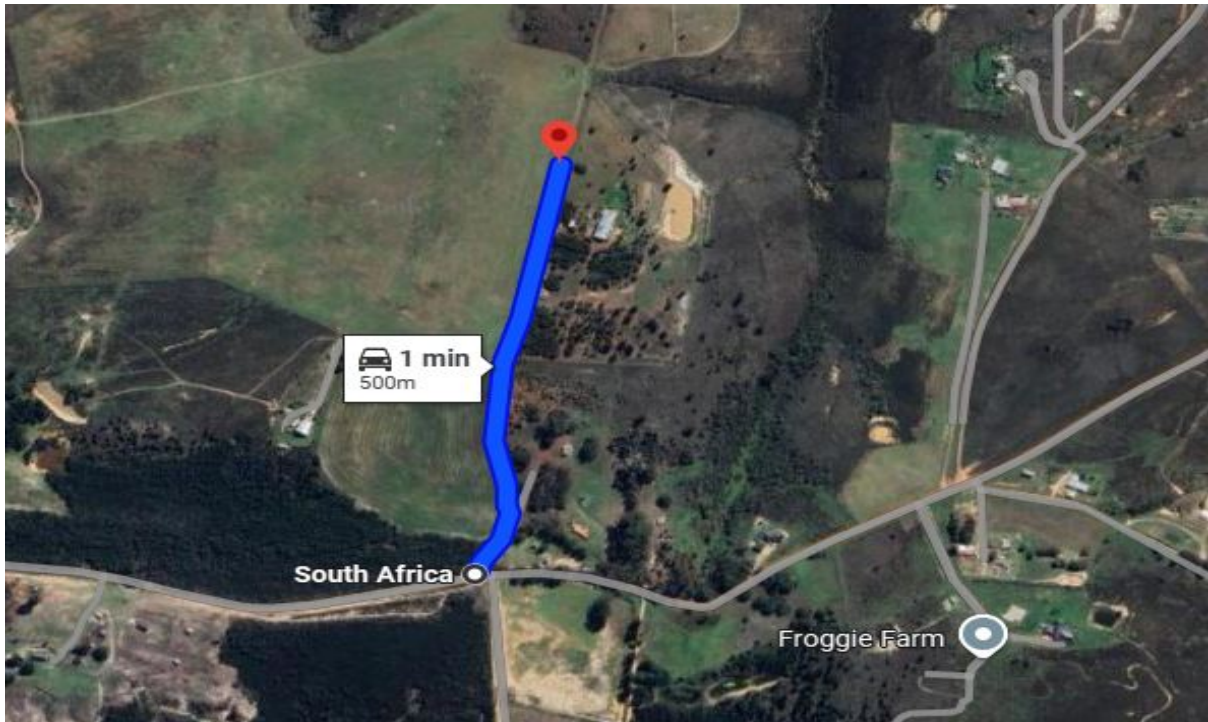
OPTION 2:

Continue through the town for 1.9km. The road changes from tar to gravel again.



As per photo below, take the first left turn (approx 400m after road has changed from tar back to gravel).





After approximately 100m, the road will fork as per picture below. Keep left.



After approximately 500m, the road will fork again as per picture below. Continue straight.



After approximately 700m, will reach the last fork in the road as per picture below. Keep left.



If you continue straight, you will arrive at Hoenderhok Estate. Congratulations, you have arrived!!

The very first unit you will encounter, will be unit 6 which also serves as reception.